



FEATURES:

Built 2002
 Remodeled/Updated 2023/24

Total Sq. Ft. - 6,020
 Total Finished Sq. Ft. - 4,823
 Main – 3,127
 Lower – 1,696

EXTERIOR:

- 4-Side Brick
- Walkout w/full view windows
- 3 Car Garage - Separate Bays
- Whole house Generator
- Whole yard Irrigation
- Landscape Lighting
- Speaker System
- Multi-Level 1,000 sq. ft. Deck - newly stained
- Cul-de-sac with 2.4 acres - mostly timbered w/creek
- Rolling topography

Kitchen/Dining

- Formal dining
- Wolf gas stove
- Custom Waterfall countertop
- Soft-close cabinets
- Accent lighting

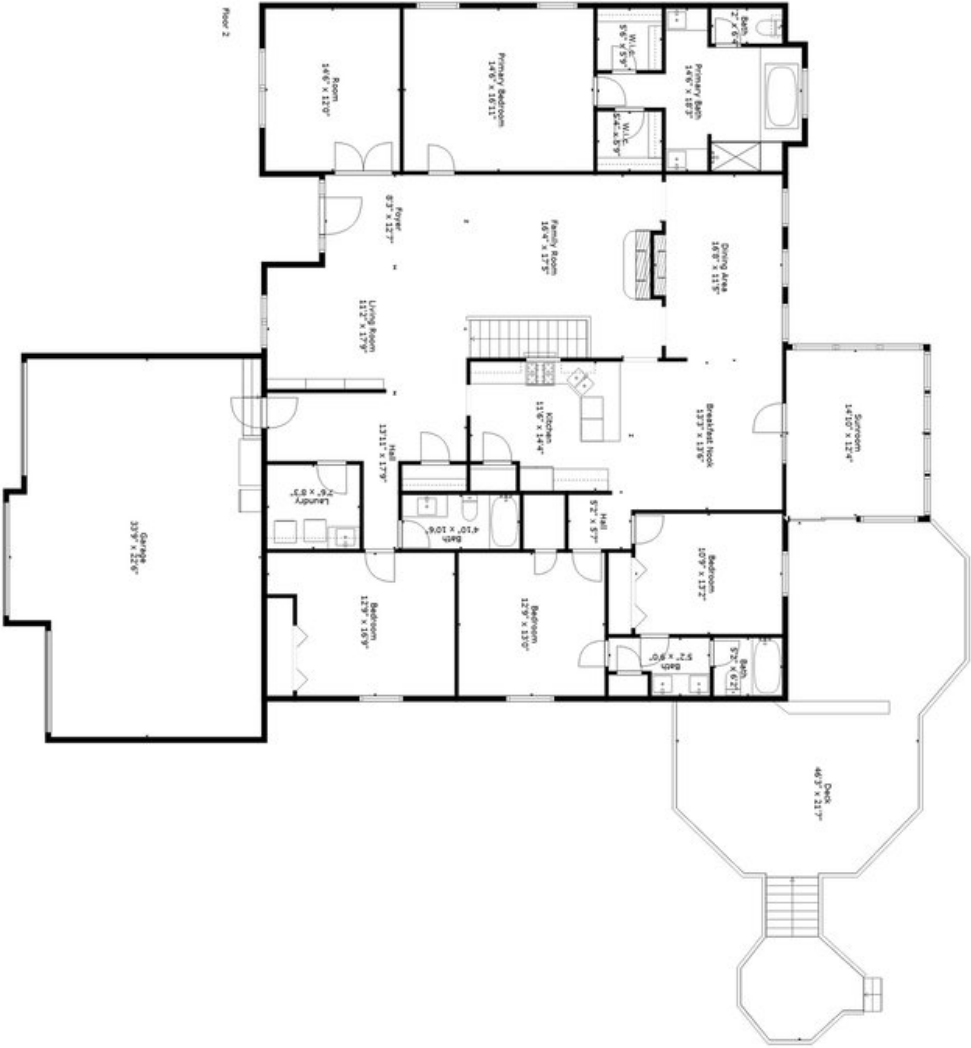
- Lower level heated garden garage/workshop w/roll up door and opener.

INTERIOR:

- 4 Bed - Split bedroom floor plan
- 4 Full baths - (Each bedroom has an attached full bath)
- New updated and open floor w/engineered hardwood floors
- New roof
- Alarm System
- Surround sound for downstairs family room
- 2 gas fireplaces
- 4 season sunroom w/heat/air.
- Power shades (Screens in lower level garage)
- Additional Kitchen in lower level
- Whole house water softener
- Whole House Central Vac
- Two gas fireplaces
- Built-in shelves in Library.
- Built-in shelves and cabinets in Den/Office.
- Coffee bar

UPDATES 2023/24

- New roof
- Remodeled main level living & main bedroom into an opened floor plan
- New flooring/new paint in Kitchen, Dining, Living, Family, Main Bedroom.
- New flooring/paint in Den
- Newly stained 1000 sq. ft. Deck.
- Re-tiled fireplace
- Updated Light fixtures and cabinet hardware
- Some new landscaping



Measurements And Sqft Are Approximate And Not Guaranteed. Actual May Vary.