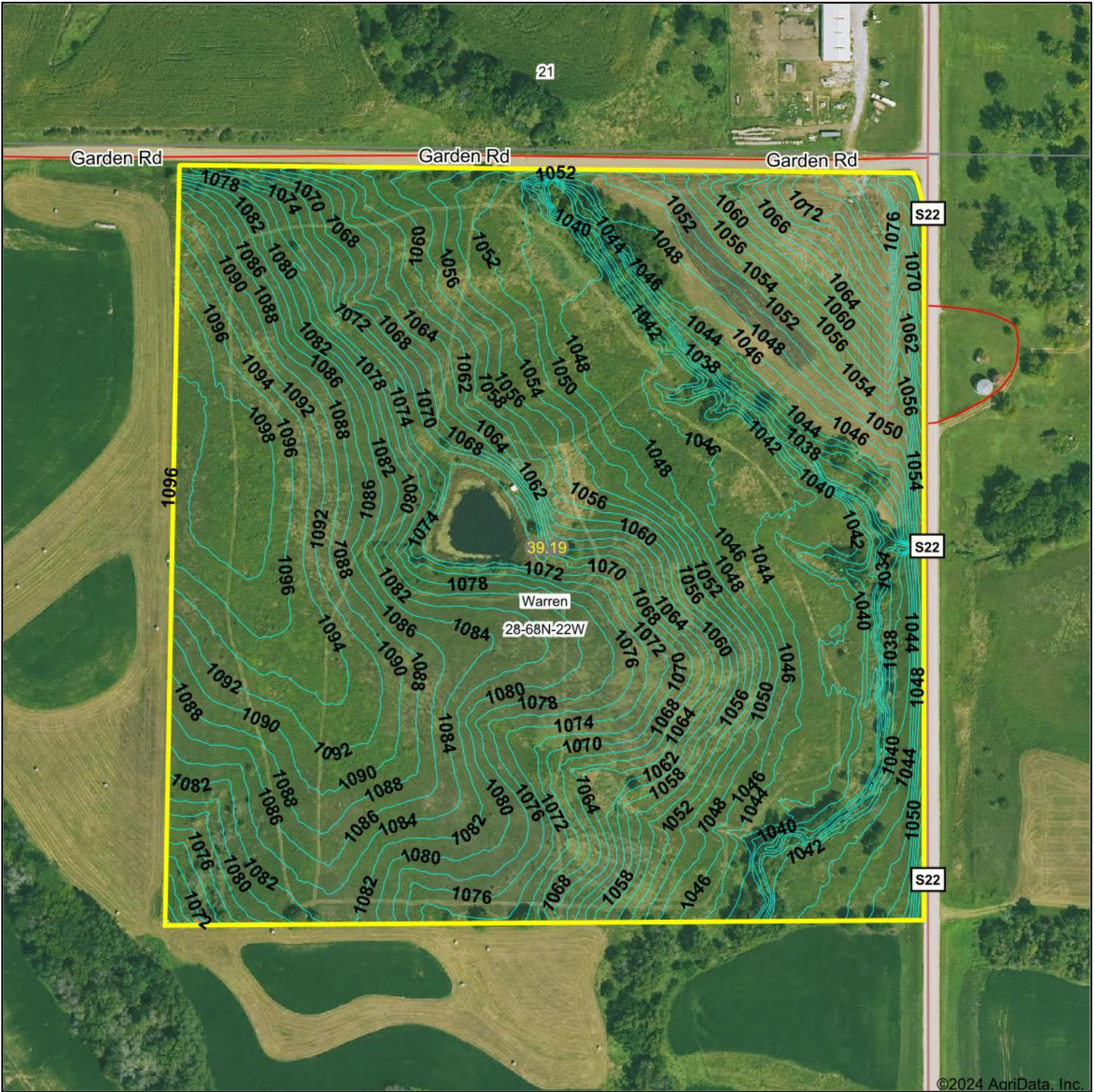
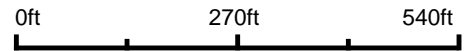


# Topography Contours



Source: USGS 1 meter dem  
 Interval(ft): 2.0  
 Min: 1,031.4  
 Max: 1,099.7  
 Range: 68.3  
 Average: 1,066.7  
 Standard Deviation: 18.54 ft



7/16/2024

28-68N-22W  
 Wayne County  
 Iowa

Boundary Center: 40° 39' 53.41, -93° 23' 46.46