

CashRentstimate

51.1 Tillable Acres Bureau County, IL
Coordinates: 41°20'44"N, 89°22'36"W

118.3 total acres

AVERAGE ANNUAL CASHRENT

\$17,170

=

\$336
Per acre

×

51.1
Tillable acres

Low Estimate
\$320/acre

High Estimate
\$352/acre

CashRental Value Factors

Variables that help determine your estimate



Average Temperature

50.1° F (13th percentile)



Annual Precipitation

49.9 in (13th percentile)



Corn

202.7 BU/acre (70th percentile)



Soy

62.6 BU/acre (74th percentile)



Aerial Map

51.1 Tillable Acres Bureau County, IL
Coordinates: 41°20'44"N, 89°22'36"W

118.3 total acres, 3 parcels



Aerial Map

51.1 Tillable Acres Bureau County, IL

118.3 total acres, 3 parcels

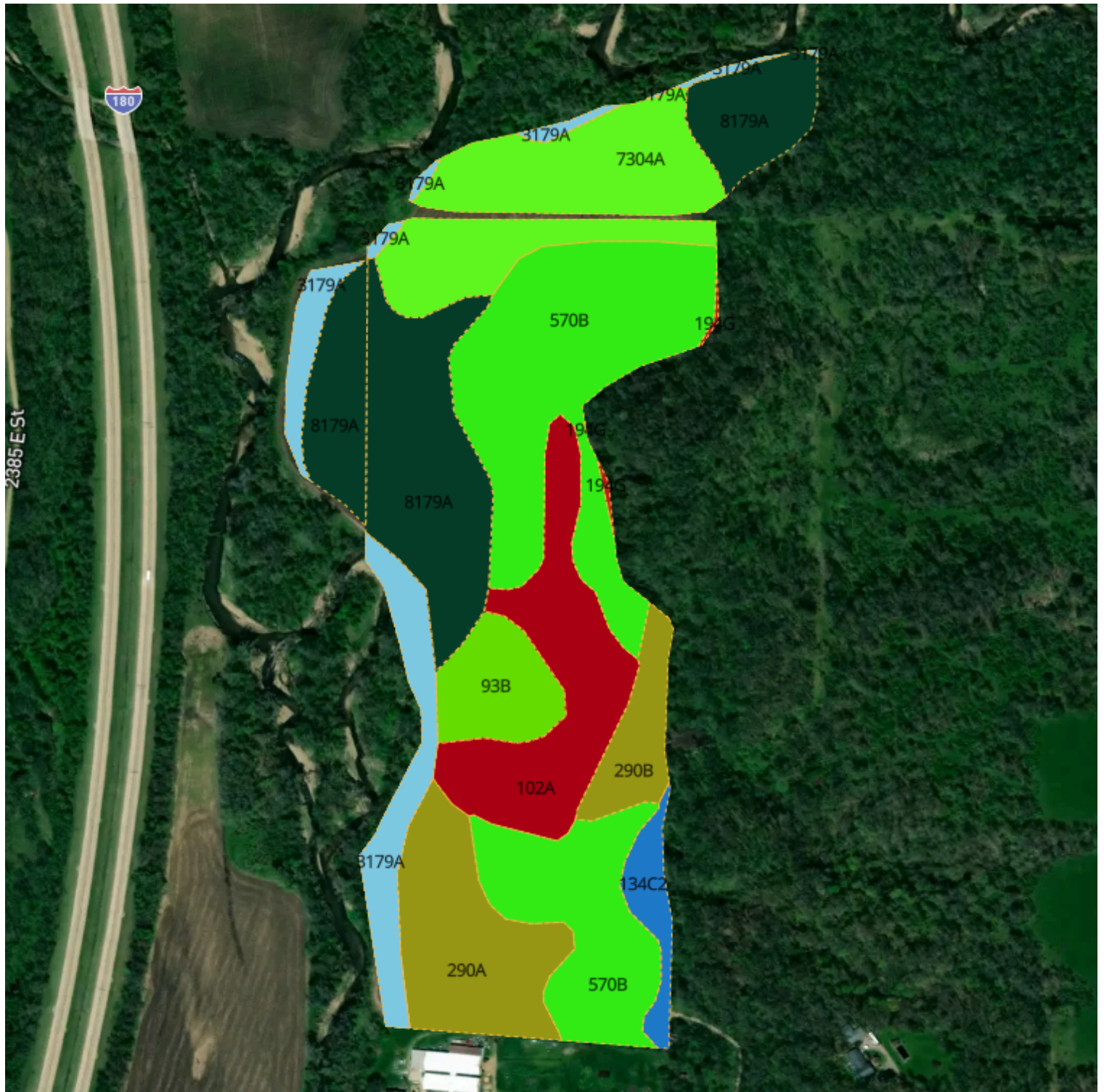
Coordinates: 41°20'44"N, 89°22'36"W

Selection	Acres	Parcel ID Number	Owner
1	15.98	1719400003	-
2	15.79	1730200004	-
3	86.5	1730200007	-

Soil Map

51.1 Tillable Acres Bureau County, IL
Coordinates: 41°20'44"N, 89°22'36"W

51.1 tillable acres, 3 selections



Soil Map

51.1 Tillable Acres Bureau County, IL

51.1 tillable acres, 3 selections

Coordinates: 41°20'44"N, 89°22'36"W

Soil Code	Soil Name	Acres	% of Field	PI
570B	Martinsville silt loam, 2 to 5 percent slopes	14.1	27.6%	113
8179A	Minneiska loam, 0 to 2 percent slopes, occasionally flooded	10.2	20%	104
7304A	Landes fine sandy loam, 0 to 2 percent slopes, rarely flooded	7.3	14.2%	100
102A	La Hogue loam, 0 to 2 percent slopes	5.7	11.1%	121
290A	Warsaw loam, 0 to 2 percent slopes	4.8	9.4%	119
3179A	Minneiska loam, 0 to 2 percent slopes, frequently flooded	3.9	7.6%	104
93B	Rodman gravelly sandy loam, 2 to 5 percent slopes	2.2	4.4%	83
290B	Warsaw loam, 2 to 5 percent slopes	1.7	3.4%	118
134C2	Camden silt loam, 5 to 10 percent slopes, eroded	1.1	2.2%	111
194G	Morley silt loam, 35 to 60 percent slopes	0.1	0.2%	54
Total		51.1		108.8 avg